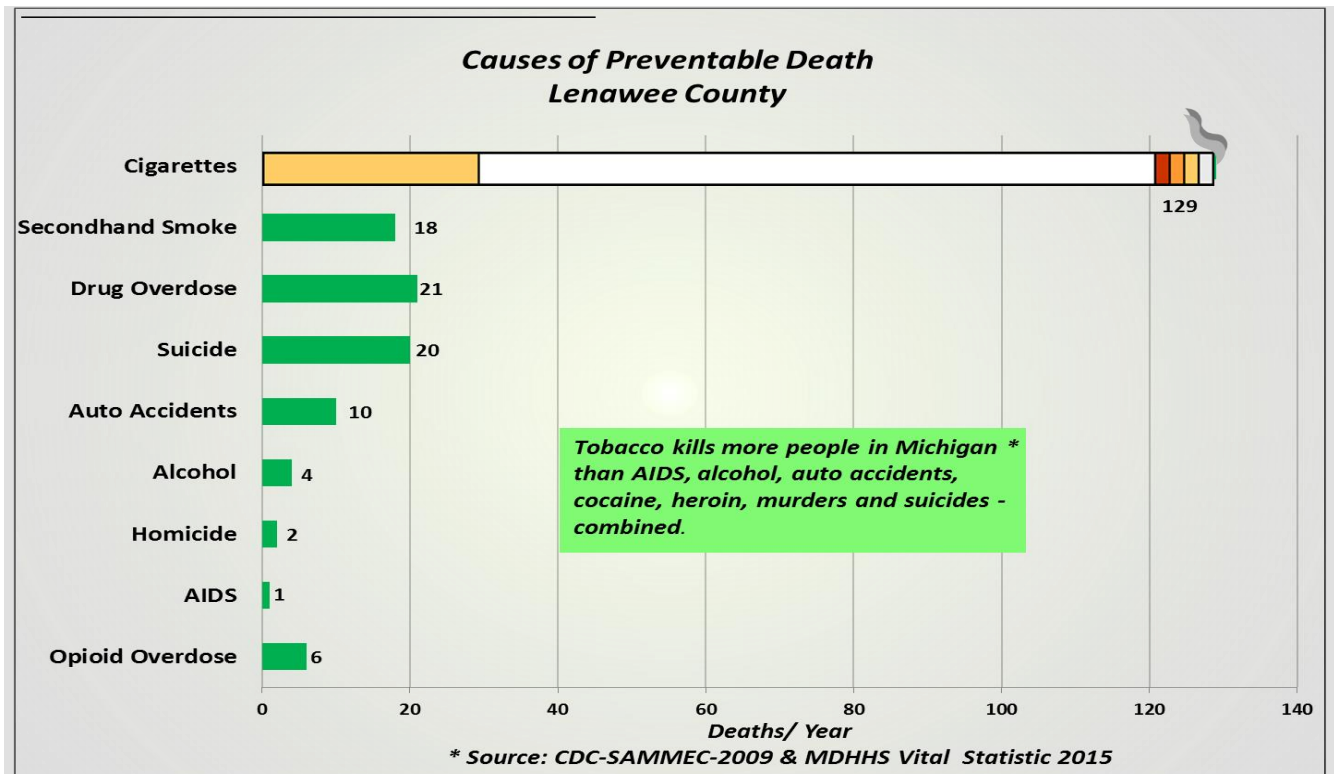


Lenawee County Health Department Tobacco Factsheet-2017



Adult Smoking Rate

13.6%

Source: Michigan Department of Health and Human Services (MDHHS), Michigan Behavioral Risk Factor Survey & Local Health Department Estimates; 2013-2015.

The 2015 adult smoking rate for the State of Michigan is 20.7%

Adult Deaths that are Directly Caused by Smoking

129

Source: Michigan Department of Health and Human Services, Division for Vital Records and Health Statistics and Centers for Disease Control and Prevention; CDC Wonder Online Database and SAMMEC Online Database, 2009.

- ❖ In 2009, there were a total of 922 deaths in Lenawee County, 129 or 14.0% of those deaths can be linked directly to tobacco use.
- ❖ Tobacco use is the single most preventable cause of disease, disability and death in the State of Michigan.
- ❖ Smoking related illnesses include but are not limited to: lung cancer, ischemic heart disease, chronic obstructive pulmonary disease (COPD) and stroke.

Non-Smokers Deaths due to SHS Exposure

18

Source: Michigan Department of Health and Human Services, Division for Vital Records and Health Statistics and Centers for Disease Control and Prevention; CDC Wonder Online Database and SAMMEC Online Database, 2009.

- ❖ Every year in Michigan over 1,740 non-smokers die as a result of exposure to secondhand smoke.
- ❖ Research shows that even 30 minutes of exposure to secondhand smoke can cause heart damage similar to that of a habitual smoker, the kind of damage that can lead to a heart attack.

Women Who Smoked While Pregnant	20.3%
--	--------------

Source: Michigan Resident Birth Files, Vital Records and Health Data Development Section, Michigan Department of Health and Human Services, 2015.

- ❖ In 2015, 17% of women in the State of Michigan smoked while they were pregnant.
- ❖ Smoking during pregnancy is the foremost preventable cause of illness and death among mothers and infants.
- ❖ Smoking during pregnancy can increase the baby's risk of developing respiratory or lung problems that can continue throughout their lifetime.
- ❖ Pregnant women who smoke or who are exposed to secondhand smoke are between 1.5 and 3.5 times more likely to have a low birth-weight baby.

There is no "safe" level of smoking while pregnant.

Smoking-Related Direct Health Care Costs	\$34.6 million
---	-----------------------

Source: Michigan Department of Community Health, Division for Vital Records and Health Statistics and Centers for Disease Control and Prevention; Smoking Attributable Morbidity, Mortality and Economic Costs (SAMMEC), 2009

- ❖ Smoking-attributable health care costs include personal health care expenditures attributed to diseases for which cigarette smoking is a primary risk factor. These expenditures can include ambulatory care, additional hospital care, nursing home care, prescription drugs, home health services and durable medical equipment expenditures.

Medicaid's Share: Smoking Related Health Care Costs	\$11.2 million
--	-----------------------

Source: Michigan Department of Community Health, Division for Vital Records and Health Statistics and Centers for Disease Control and Prevention; Smoking Attributable Morbidity, Mortality and Economic Costs (SAMMEC), 2009

- ❖ Approximately 32.4% of the smoking-related health care costs incurred by residents within Lenawee County Health Department are paid by Michigan's Medicaid State Plan

Smoking Related Health Care Costs per Capita	\$346
---	--------------

Source: Michigan Department of Community Health, Division for Vital Records and Health Statistics and Centers for Disease Control and Prevention; Smoking Attributable Morbidity, Mortality and Economic Costs (SAMMEC), 2009.

- ❖ In 2009, health care costs related to treating smoking-related diseases were \$346 per person within Lenawee County Health Department.
- ❖ The smoking-related health care costs per capita for the State of Michigan is \$341.

Smoking-Related Taxes Paid by Michigan Households	\$602 per household
--	----------------------------

Source: Tobacco Free Kids; Retrieved July 20, 2011

- ❖ The state and federal tax burden to each household to pay for smoking-related governmental costs.

Enrollees to the Michigan Tobacco Quit Line	59
--	-----------

Source: Michigan Tobacco Quit Line: January 2016 – December 2016

- ❖ 26.1% of all Quit Line enrollees, have reported being tobacco-free seven (7) months after enrollment
- ❖ For every smoker that successfully quits, their total lifetime cost savings to themselves and society can be as high as \$68,300.
- ❖ Through the use of the Michigan Tobacco Quit Line, residents within the Lenawee County Health Department have potentially prevented \$5.5 million - \$8.0 million in total lifetime medical expenditures and lost productivity costs.